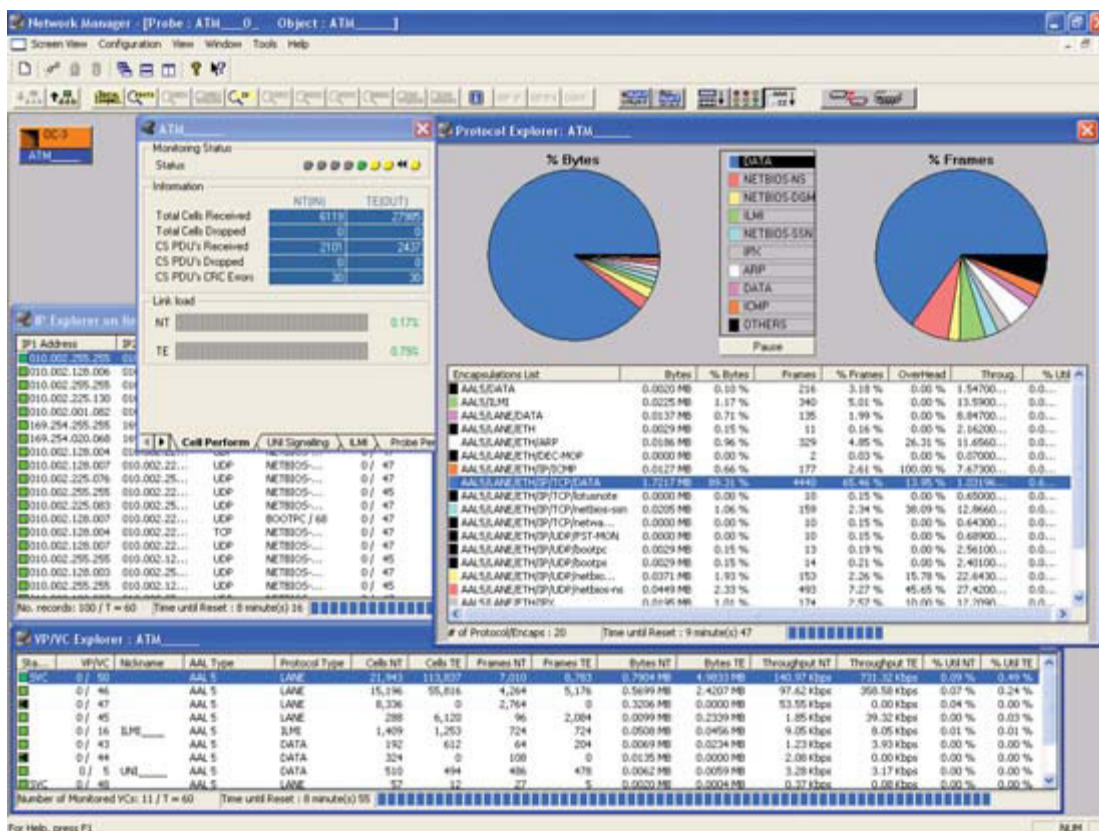




# ZettaView ATM

## Intelligent Network Monitoring System



ZettaView ATM Real-Time Explorers allow network professionals to see an up to the minute picture of what Protocols, VPI/VCs and IP Pairs are in use.

ZettaView ATM is an intelligent network monitoring system that enables network professionals in enterprise and service provider organizations to monitor the widest range of ATM and IP traffic over ATM links up to 622 Mb/s, thus allowing them to maximize their network's performance. Solutions are available to monitor DS3, E3, OC-3/STM-1 and OC-12/STM-4 links.

### KEY BENEFITS

- Automatically detect VC/VPs, Protocols and IP Pairs to quickly and cost effectively identify bandwidth usage.
- Clearly and easily identify network problems with unsurpassed 10-second data granularity.
- Anticipate network problems before they occur and conduct effective capacity planning with detailed real-time and historical data.





ZettaView Features	Technical Specifications	Hardware Specifications
<b>Automatic Discovery</b> <ul style="list-style-type: none"> <li>• 1000 Protocols, 4096 VP/VCs, 5000 IP Pairs, 5000 IP conversation pairs</li> </ul> <b>Configuration</b> <ul style="list-style-type: none"> <li>• “Plug &amp; Play” or configurable</li> </ul> <b>System Architecture</b> <ul style="list-style-type: none"> <li>• Distributed client and probe</li> </ul> <b>Reporting Features</b> <ul style="list-style-type: none"> <li>• Over 300 pre-defined reports</li> <li>• Scheduled Web report posting</li> <li>• Historical trend analysis</li> <li>• Quality of Service (QoS) analysis</li> <li>• Bandwidth utilization management</li> <li>• Service Level Agreement (SLA) verification</li> <li>• Alarm management with real-time notification</li> <li>• Up to 10-second data granularity</li> </ul>	<b>Network Technology Support</b> <ul style="list-style-type: none"> <li>• OC12/STM-4 Single and Multi-Mode, OC3/STM-1 Single and Multi-Mode, Full and Half Duplex</li> <li>• DS3, E3 Full Duplex</li> </ul> <b>Data Reporting</b> <ul style="list-style-type: none"> <li>• Real-time: IP traffic, Protocol applications, VP/VC management, etc.</li> <li>• Historical: Load &amp; Rate, Protocol management, IP analysis, IP Sub Network analysis, IP Pairs per TCP port, VP/VC management and analysis, etc.</li> <li>• Traffic breakdown by link and VP/VC, AAL type, Protocol type, IP address, Protocol port</li> <li>• SNMP alarm management</li> </ul>	<b>Physical Characteristics (WxDxH) in Inches</b> <ul style="list-style-type: none"> <li>• ATM Probes (2U Unit): 19”x19.1”x3.5” (483x486x89mm)</li> </ul> <b>System Architecture</b> <ul style="list-style-type: none"> <li>• Processor &amp; RAM: Intel Celeron D 2.8 GHz, 512 Megabytes</li> <li>• Storage: 80 Gigabyte SATA Support</li> <li>• Ethernet Administration Interface</li> </ul> <b>MultiPort Probe Support</b> <ul style="list-style-type: none"> <li>• Can monitor up to 4 separate ATM links in just a single unit</li> </ul>

**Benefits**

- Support for OC-12/STM-4, OC-3/STM-1, DS3, E3
- 10-second data granularity
- Historical data stored on probe for up to 2 years
- Auto-discovery and real-time statistics for the Physical layer, ATM layer, IP layer and each VP/VC pair
- Out-of-the-Box solutions:
  - Easy configuration
  - Upgradeable from remote locations
  - Full Web reporting
  - Alarm notification and management
- Statistics available:
  - Daily
  - Weekly
  - Monthly
  - Annually

**ZettaView ATM Functionality**

To maximize the usage of bandwidth, the **ZettaView ATM system** allows you to automatically monitor and collect ATM and IP traffic data from ATM links up to 622 Mb/s. Data acquisition and monitoring solutions are available at full-wire rates of 622 Mb/s, 155 Mb/s, 45 Mb/s and 34 Mb/s. Collected data can be interpreted and stored on the probe’s hard disk for a period of up to 2 years. The ZettaView ATM system can be run in either Monitoring Mode to produce and store statistics and alarms or in Capture Mode to store the ATM cells and effectively manage your bandwidth.

The **ZettaView Manager** application software within the ATM system allows the user to manage information gathered by the ATM probe, to manage key metrics in real-time, to view and edit statistics and to remotely configure and manage the probes.

ZettaView’s unsurpassed 10-second data granularity allows you to quickly and easily identify network problems before they occur and correctly plan for network capacity needs. The ZettaView Explorer Software is capable of auto-detecting VC/VPs (up to 4096), Protocols (1000 per 10 second interval) and IP Pairs (up to 5000). Aggregated statistics are available for the Physical layer, the IP Pairs, and Protocols (10 minute period), the ATM layer (10 second, 1 minute and 10 minute periods), and each VP/VC (10 minutes on each, 10 seconds for 16 selected VP/VCS). Statistics are aggregated for a period of up to 2 years.

“The data granularity and high volume real-time monitoring in ZettaView provided detailed views and reporting on all our credit card transaction activity. We were able to verify that our service provider’s network could handle our volume.”

- A major U.S. credit card company



ZettaView Inc.  
 4115 North Progress Drive  
 Ottawa, IL 61350  
 Toll Free: 1 888 938 8284  
 Tel: +1 815 434 6000  
 Fax: +1 815 434 6543  
 E-mail: sales@zettaview.com  
 web: www.zettaview.com