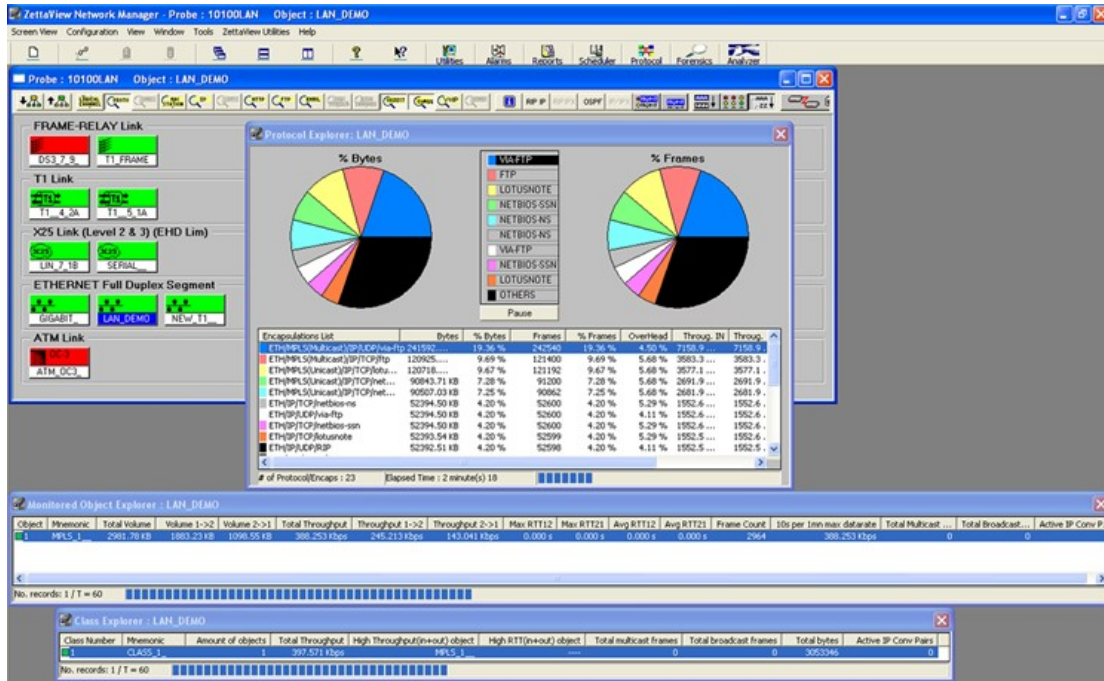




# ZettaView Gig

## Intelligent Network Monitoring System



ZettaView Gig probes feature an RTP Explorer and VoIP Reports to analyze voice over IP traffic on your network.

ZettaView Gig is an intelligent network monitoring system that allows enterprise network professionals and service provider organizations to maximize the performance of their network.

Copper or fiber interfaces support span port or network tap installations.



### KEY BENEFITS

- Quickly and cost effectively identify bandwidth usage through automatic detection of protocols, IP applications, conversation pairs, users, MAC addresses, VLANs, HTTP transactions, E-Mail, FTP, MPLS, and VoIP traffic.
- Easily identify and clearly interpret network problems with unsurpassed 10-second data granularity.
- Anticipate network problems before they occur and conduct effective capacity planning with detailed real-time and historical data.



**Benefits**

- 10-second data granularity
- Historical data stored for up to 2 years
- Easily understands IP traffic
- Out-of-the-box solutions:
  - Easy configuration
  - Upgradeable from remote locations
  - Full Web reporting
  - Alarm notification and management
- Statistics available:
  - Daily
  - Weekly
  - Monthly
  - Yearly

ZettaView Features	Technical Specifications	Hardware Specifications
<p><b>Automatic Discovery</b></p> <ul style="list-style-type: none"> <li>• Up to 500 protocols, up to 16,000 IP conversation pairs, up to 10,000 MAC addresses, up to 10,000 HTTP transfers, up to 2,500 FTP transfers, up to 2,500 e-mail transfers and 4096 VLANs</li> </ul> <p><b>Configuration</b></p> <ul style="list-style-type: none"> <li>• “Plug &amp; Play” or configurable</li> </ul> <p><b>System Architecture</b></p> <ul style="list-style-type: none"> <li>• Distributed probe and client</li> </ul> <p><b>Reporting Features</b></p> <ul style="list-style-type: none"> <li>• Over 300 pre-defined reports</li> <li>• Scheduled web report posting</li> <li>• Historical trend analysis</li> <li>• Quality of Service (QoS) analysis</li> <li>• Bandwidth utilization management</li> <li>• Service Level Agreement (SLA) verification</li> <li>• Alarm management with real-time notification</li> <li>• Up to 10 second data granularity</li> </ul>	<p><b>Network Technology Support</b></p> <ul style="list-style-type: none"> <li>• Gigabit ethernet, copper or fiber</li> </ul> <p><b>Data Reporting</b></p> <ul style="list-style-type: none"> <li>• Real-Time: IP traffic, protocol applications, bandwidth utilization, web connections, and more.</li> <li>• Historical: load &amp; rate, protocol management, IP addresses, IP applications, IP sub-network analysis, MAC addresses, IPX addresses, web server management, and more.</li> <li>• Traffic breakdown by IP conversation pairs, protocols, IPX transfers, MAC addresses, HTTP transactions, FTP transfers and e-mail transfers.</li> </ul>	<p><b>Physical Characteristics (WxDxH) in Inches</b></p> <ul style="list-style-type: none"> <li>• 2 rack units (2U): 19”x19.1”x3.5” (483x486x89mm)</li> </ul> <p><b>System Architecture</b></p> <ul style="list-style-type: none"> <li>• Processor &amp; RAM: Intel Dual Xeon, 2.8 GHz, 1 Gigabyte</li> <li>• Storage: 80 Gigabyte SATA</li> <li>• Span port or tap mode with copper or fiber interfaces</li> </ul> <p><b>Support</b></p> <ul style="list-style-type: none"> <li>• 10/100 ethernet admin. interface</li> </ul>

**ZettaView Gig Functionality**

The ZettaView Gig system includes an IP Explorer that provides unsurpassed real-time data, including: IP Connections, Address Pairs, IP Address Roots and MAC Addresses. This level of detailed data provides the network professional with the information needed to identify and optimize bandwidth usage. The Email Explorer is available for POP3 (TCP port 110) and SMTP (TCP port 25).

Additional real-time data can also be obtained for Protocol/Application Distribution including encapsulated lists and details. Network bandwidth utilization in 10 second and 1 minute increments is also provided for total frames, CRC errors, alignment errors, runts, collisions, dropped frames and web connections including the correlation between URL and IP.

ZettaView Gig’s ability to provide detailed information in 10 second increments enables network managers to accurately monitor network behavior. The combination of real-time and historical data provided by ZettaView allows the network manager to anticipate problems before they occur and proactively forecast network growth.

“ZettaView provides me with better knowledge of the network and allows me to see exactly what is happening at a given moment. ZettaView has literally changed my weekly routine. I now proactively look for ways to improve network performance, rather than constantly trying to alleviate symptoms without a clear view of the problem. And I’m still finding new uses for it!”  
 - Major U.S. Insurance Company



ZettaView Inc.  
 4115 Progress Drive  
 Ottawa, IL 61350  
 Toll Free: 1 888 938 8284  
 Tel: +1 815 434 6000  
 Fax: +1 815 434 6543  
 E-mail: sales@zettaview.com  
 web: www.zettaview.com