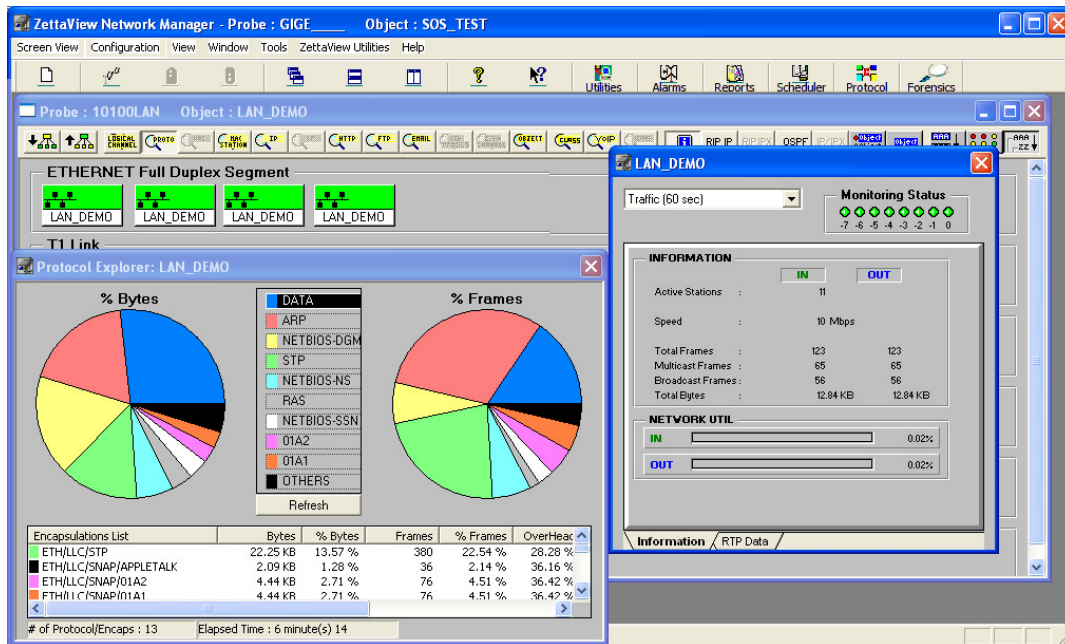




ZettaView MultiPort

Intelligent Network Monitoring System



Each port on a ZettaView MultiPort probe can manage a single full-duplex link, up to 4 links! As an example; you can monitor your ATM network, your 10/100 Ethernet network, your wireless network, AND your WAN all in a single unit!

ZettaView MultiPort is an intelligent network monitoring system that enables network professionals in enterprise and service provider organizations to maximize the performance of their local area network in order to provide the highest level of Quality of Service (QoS). Solutions are offered in both copper and fiber, as well as half and full duplex.

KEY BENEFITS

- The Ability to monitor multiple networks all from one rack mounted probe
- Clearly and easily identify network problems with unsurpassed 10-second data granularity
- Anticipate network problems before they occur and conduct effective capacity planning with detailed real-time and historical data.





Benefits

- 10-second data granularity
- Historical data stored for up to 2 years
- Easily understands IP traffic
- Out-of-the-Box solutions:
 - Easy configuration
 - Upgradeable from remote locations
 - Full Web reporting
 - Alarm notification and management
- Statistics available:
 - Daily
 - Weekly
 - Monthly
 - Annually

ZettaView Features	Technical Specifications	Hardware Specifications
Automatic Discovery <ul style="list-style-type: none"> • Automatic DLCI Discovery • Automatic Vlan Discovery • Automatic VP/VC Discovery Configuration <ul style="list-style-type: none"> • “Plug & Play” or configurable System Architecture <ul style="list-style-type: none"> • Distributed client and probe Reporting Features <ul style="list-style-type: none"> • Over 300 pre-defined reports • Scheduled Web report posting • Historical trend analysis • Quality of Service (QoS) analysis • Bandwidth utilization management • Service Level Agreement (SLA) verification • Alarm management with real-time notification • Up to 10 second data granularity 	Network Technology Support <ul style="list-style-type: none"> • Ethernet: 10/100 copper and fiber • Wireless B/G and Super G • ATM: OC3/DS3 • WAN: HSSI, DS3, T1, E1, E3, Serial Data Reporting <ul style="list-style-type: none"> • Real-Time: IP traffic, Protocol applications, bandwidth utilization, Web connections, etc. • Historical: Load & Rate, Protocol management, IP addresses, IP applications, IP Sub-Network analysis, MAC addresses, IPX addresses, Web Server management, etc. • Traffic breakdown by IP conversation pairs, Protocols, IPX transfers, MAC addresses, HTTP transfers, FTP transfers and e-mail transfers 	Physical Characteristics (WxDxH) in Inches <ul style="list-style-type: none"> • Any combination of links and full or half duplex (4U Unit): 19”x19.1”x6.9” (483x486x177mm) System Architecture <ul style="list-style-type: none"> • 4 Independent SBC’s • Processor & RAM: 4 X Intel Celeron, 2.8 GHz, 512 Megabyte • Storage: 4 X 80 Gigabyte SATA Support • Ethernet Administration Interface for each port

ZettaView MultiPort Functionality

The ZettaView MultiPort system includes an IP Explorer that provides unsurpassed real-time data, including: IP Connections, Address Pairs, IP Address Roots and MAC Addresses. This level of detailed data provides the network professional with the information needed to identify and optimize bandwidth usage.

Additional real-time data can also be obtained for Protocol/Application Distribution including encapsulated lists and details. Network bandwidth utilization in 10 second and 1 minute increments is also provided for total frames, CRC errors, alignment errors, runts, collisions, dropped frames and Web connections including the correlation between URL and IP.

As an increasing amount of mission critical data is placed on networks, ZettaView MultiPort’s ability to provide detailed information in 10 second increments enables network managers to accurately monitor network behavior. The combination of real-time and historical data provided by ZettaView allows the network manager to anticipate problems before they occur and forecast the growth needs of the network proactively.

“ZettaView provides me with better knowledge of the network and allows me to see exactly what is happening at a given moment. ZettaView has literally changed my weekly routine. I now pro-actively look for ways to improve network performance, rather than constantly trying to alleviate symptoms without a clear view of the problem. And I’m still finding new uses for it!”
 - A Major US Insurance Company



ZettaView Inc.
 4115 North Progress Drive
 Ottawa, IL 61350
 Toll Free: 1 888 938 8284
 Tel: +1 815 434 6000
 Fax: +1 815 434 6543
 E-mail: sales@zettaview.com
 web: www.zettaview.com