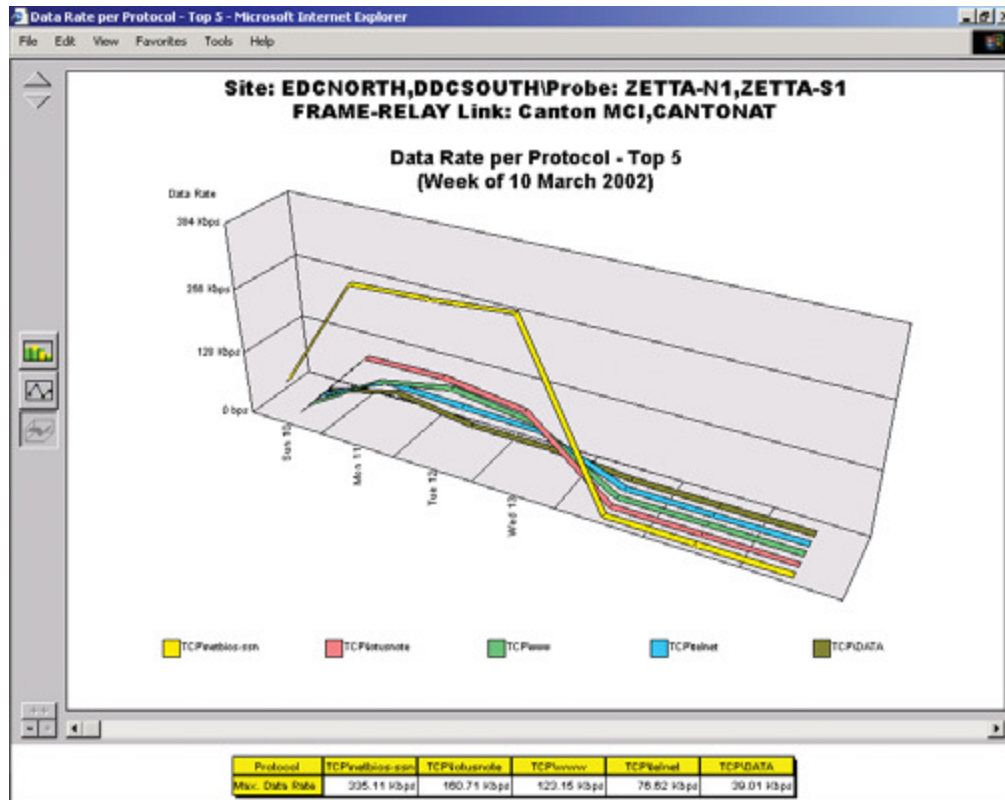




ZettaView WAN

Intelligent Network Monitoring System



ZettaView WAN's statistical reporting allows network professionals to view IP conversation pairs and determine how to properly allocate their bandwidth.

ZettaView WAN is an intelligent network monitoring system that provides network professionals in enterprise and service provider organizations with performance data for strategic WAN links that carry business-critical applications. ZettaView WAN can monitor Frame Relay, X.25 and HDLC/PPP networks, providing data on Protocols, IP Applications, IP Users and Conversation Pairs.



KEY BENEFITS

- Increase staff productivity, network availability and QoS with "Plug and Play" installation and automatic monitoring of Frame Relay DLCIs with IP protocols and IP application tracking.
- Clearly and easily identify network problems with unsurpassed 10-second data granularity.
- Anticipate network problems before they occur and conduct effective capacity planning with detailed real-time and historical data.



Benefits

- 10-second data granularity
- Historical data stored for up to 2 years
- Easily understands IP traffic
- Out-of-the-Box solutions:
 - Easy configuration
 - Upgradeable from remote locations
 - Full Web reporting
 - Alarm notification and management
- Statistics available:
 - Daily
 - Weekly
 - Monthly
 - Annually



ZettaView Inc.
 4115 North Progress Drive
 Ottawa, IL 61350
 Toll Free: 1 888 938 8284
 Tel: +1 815 434 6000
 Fax: +1 815 434 6543
 E-mail: sales@zettaview.com
 web: www.zettaview.com

ZettaView Features	Technical Specifications	Hardware Specifications
<p>Automatic Discovery</p> <ul style="list-style-type: none"> • Up to 50 Protocols, up to 600 DLCIs, up to 16 IP Applications, up to 64 IP Connections, up to 4000 IP conversation pairs <p>Configuration</p> <ul style="list-style-type: none"> • “Plug & Play” or configurable <p>System Architecture</p> <ul style="list-style-type: none"> • Distributed client and probe <p>Reporting Features</p> <ul style="list-style-type: none"> • Over 300 pre-defined reports • Scheduled Web report posting • Historical trend analysis • Quality of Service (QoS) analysis • Bandwidth utilization management • Service Level Agreement (SLA) verification • Alarm management with real-time notification • Up to 10 second data granularity 	<p>Network Technology Support</p> <ul style="list-style-type: none"> • Serial (V.35, V.36, V.24, V.11): Up to 16 lines at 1 or 2 Mb/s, Up to 8 lines at 4 Mb/s and T1/E1 lines Up to 8 channeled • High speed WAN: DS3, E3 and HSSI <p>Data Statistics</p> <ul style="list-style-type: none"> • Real-Time: IP traffic, Protocol applications, DLCI management, etc. • Historical: Load & Rate, Protocol management, IP analysis, IP Sub Network analysis, DLCI management and analysis, e-mail, FTP and HTTP analysis, etc. • Traffic breakdown by link and DLCI, IP pairs, Protocols, FTP servers <p>Frame Relay/Internet and Router-HDLC/Internet Support</p> <ul style="list-style-type: none"> • Auto detect HTTP, E-mail and FTP traffic <p>Frame Relay/ TCP-QoS and Router-HDLC/TCP-QoS Support</p> <ul style="list-style-type: none"> • Auto detect TCP process: IP conversations, HTTP and Oracle 	<p>Physical Characteristics (WxDxH) in Inches</p> <ul style="list-style-type: none"> • 1700, 1600 and 1800 Series DS3, E3 and HSSI (2U Unit): 19”x19.1”x3.5” (483x486x89mm) • 3500, 2500 and 2000 Series (4U Unit): 19”x19.1”x6.9” (483x486x177mm) <p>System Architecture</p> <ul style="list-style-type: none"> • Processor & RAM: (2U) Intel Celeron 2.8GHz, 512 Megabyte • Storage: 80 Gigabyte SATA • Processor & RAM: (4U) Intel Celeron 2.8Ghz, 512mb Support • Ethernet Administration Interface

ZettaView WAN Functionality

ZettaView WAN’s easy installation and ability to automatically detect Frame Relay DLCIs with IP Protocols and IP Application tracking enable an organization’s network staff to increase Productivity and network availability. Located at the access interface on either an enterprise or carrier’s premises, ZettaView WAN is typically used to monitor critical business applications that are carried on strategic WAN links. A variety of interfaces enables the ZettaView WAN system to monitor E1/T1 and up to 8 Mb/s serial lines (V.24, V.35, X.21/V.11, V.36). ZettaView WAN also allows you to monitor high speed WAN interfaces (HSSI, DS3, E3). ZettaView WAN customers are given the choice of configurable or pre-configured systems.

ZettaView WAN’s distributed architecture provides the scalability and data granularity that enable the system to provide the user with a full range

of measurements. These measurements include bandwidth utilization and end-to-end Round Trip Time, that allow the user to anticipate and solve network problems before they occur and to develop effective capacity plans.

Automatic event monitoring and data management allows the user to view network activities in daily, weekly, monthly and annual time segments. Statistical drill-down capabilities and automatic dissemination of reports via web or intranet servers and printers enable users to proactively address situations before they become critical.

“ZettaView totally changed the way we diagnose and fix problems. Now I can see what is happening on all my WAN links from a central location. ZettaView paid for itself in the first week of operation.”

- A Major US Insurance Company