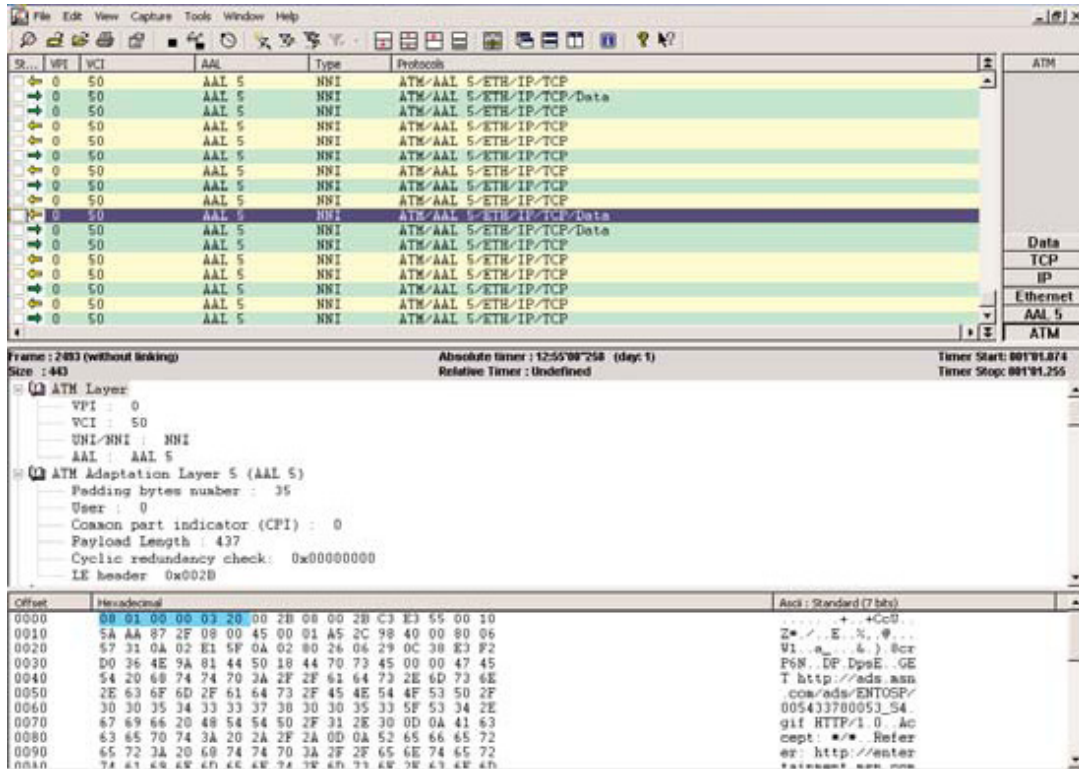




ZettaView WIFI

Intelligent Network Monitoring System



ZettaView WIFI Protocol Analyzer allows network professionals to perform captures on their network to assist them in complex troubleshooting by allowing bit level viewing.

ZettaView WIFI is an intelligent network monitoring system that enables network professionals in enterprise and service provider organizations to maximize the performance of their local area network in order to provide the highest level of Quality of Service (QoS). Solutions are offered in both Wireless B, G, and Super G configurations.

KEY BENEFITS

- Quickly and cost effectively identify bandwidth usage through automatic detection of Protocols, IP applications, conversation pairs, users, MAC addresses, VLANs, HTTP, E-Mail and FTP Traffic.
- Clearly and easily identify network problems with unsurpassed 10-second data granularity.
- Anticipate network problems before they occur and conduct effective capacity planning with detailed real-time and historical data.
- Optional Portable and Software only solutions allow wireless monitoring flexibility to the highest degree.





Benefits

- 10-second data granularity
- Historical data stored for up to 2 years
- Easily understands IP traffic
- Out-of-the-Box solutions:
 - Easy configuration
 - Upgradeable from remote locations
 - Full Web reporting
 - Alarm notification and management
- Statistics available:
 - Daily
 - Weekly
 - Monthly
 - Annually

ZettaView Features	Technical Specifications	Hardware Specifications
Automatic Discovery <ul style="list-style-type: none"> • Up to 500 Protocols, up to 16,000 IP conversation pairs, up to 10,000 MAC Addresses, up to 10,000 HTTP transfers, up to 2,500 FTP transfers, up to 2,500 e-mail transfers and 4096 VLANs Configuration <ul style="list-style-type: none"> • “Plug & Play” or configurable System Architecture <ul style="list-style-type: none"> • Distributed client and probe Reporting Features <ul style="list-style-type: none"> • Over 300 pre-defined reports • Scheduled Web report posting • Historical trend analysis • Quality of Service (QoS) analysis • Bandwidth utilization management • Service Level Agreement (SLA) verification • Alarm management with real-time notification • Up to 10 second data granularity 	Network Technology Support <ul style="list-style-type: none"> • 10/100 Ethernet copper or fiber Data Reporting <ul style="list-style-type: none"> • Real-Time: IP traffic, Protocol applications, bandwidth utilization, Web connections, etc. • Historical: Load & Rate, Protocol management, IP addresses, IP applications, IP Sub-Network analysis, MAC addresses, IPX addresses, Web Server management, etc. • Traffic breakdown by IP conversation pairs, Protocols, IPX transfers, MAC addresses, HTTP transfers, FTP transfers and e-mail transfers 	Physical Characteristics (WxDxH) in Inches <ul style="list-style-type: none"> • Full Duplex Wireless B/G and Super G (2U Unit): 19”x19.1”x3.5” (483x486x89mm) System Architecture <ul style="list-style-type: none"> • Processor & RAM: Intel Celeron, 2.8 GHz, 512 Megabyte • Storage: 80 Gigabyte SATA Support • Ethernet Administration Interface MultiPort Probe Support <ul style="list-style-type: none"> • Can monitor up to 4 separate LAN links in just a single unit

ZettaView WIFI Functionality

The ZettaView WIFI system includes an IP Explorer that provides unsurpassed real-time data, including: IP Connections, Address Pairs, IP Address Roots and MAC Addresses. This level of detailed data provides the network professional with the information needed to identify and optimize bandwidth usage. The Email Explorer is only available for POP3 (110) and SMTP (25).

Additional real-time data can also be obtained for Protocol/Application Distribution including encapsulated lists and details. Network bandwidth utilization in 10 second and 1 minute increments is also provided for total frames, CRC errors, alignment errors, runts, collisions, dropped frames and Web connections including the correlation between URL and IP.

As an increasing amount of mission critical data is placed on networks, ZettaView WIFI’s ability to provide detailed information in 10 second increments enables network managers to accurately monitor network behavior. The combination of real-time and historical data provided by ZettaView allows the network manager to anticipate problems before they occur and forecast the growth needs of the network proactively.

“ZettaView provides me with better knowledge of the network and allows me to see exactly what is happening at a given moment. ZettaView has literally changed my weekly routine. I now pro-actively look for ways to improve network performance, rather than constantly trying to alleviate symptoms without a clear view of the problem. And I’m still finding new uses for it!”
 - A Major US Insurance Company



ZettaView Inc.
 4115 North Progress Drive
 Ottawa, IL 61350
 Toll Free: 1 888 938 8284
 Tel: +1 815 434 6000
 Fax: +1 815 434 6543
 E-mail: sales@zettaview.com
 web: www.zettaview.com